

COVID-19 Travel Considerations

Guidance for when there are no clear answers

While not enough is known to set guidelines based on medical trends, we would encourage you to consider these factors when trying to decide if it's safe to travel:



Infection data and social distancing recommendations where you live, where you will visit, and any pass-through countries or airports



Foreign entry requirements



Availability and standards for testing, data collection, and regulations of host country



Trustworthiness of medical data from host country



Comparison of host country's medical data and response with other neighboring countries



US State department and CDC travel warnings



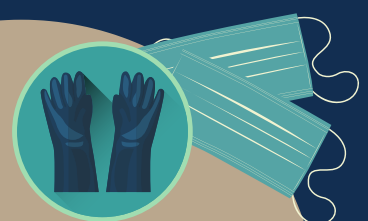
Airline restrictions or requirements



Travel/Medical insurance coverage and availability of health care in your host country



Group size and ability to social distance



Personal habits such as proper use of gloves and masks, and washing hands



SOE.
STANDARDS OF EXCELLENCE
IN SHORT-TERM MISSION

www.soe.org
1.503.360.1865
admin@soe.org